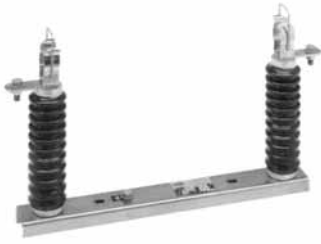




Gears & Fuse Gears

Medium Voltage Fuses SI Fuse Bases DIN Fuse Base



K209424A



E092855A

Fuse Holder

Rated Voltage (V)	Size	Use	Reference Number	Catalog Number
7200	SI 7,2/192	indoor	G209421	SI72V192
12000	SI 12/292	indoor	H209422	SI120V292
17500	SI 17,5/292	indoor	J209423	SI175V292
24000	SI 24/442	indoor	K209424	SI 240V442
36000	SI 36/537	indoor	M209426	SI360V537
12000	SE 12/292	outdoor	S210328	SE120V292
17500	SE 17,5/292	outdoor	T210329	SE175V292
24000	SE 24/442	outdoor	V210330	SE240V442
36000	SE 36/537	outdoor	W210331	SE360V537

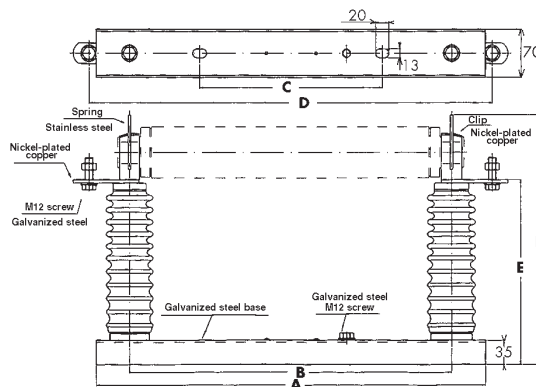
Packaging: 1 piece

Indicating Device

Rated Voltage (KV)	Number of microswitches	Reference Number	Catalog Number
12/36	1 NO/NC	E092855A	MC1-5NFLEXQS500
12/36	2 NO/NC	F092856A	MC1-9NFLEXQS500

Packaging: 1 piece

Dimensions



Rated Voltage (V)	Fuse Length L (mm)	Size	Rated withstand Voltage line-mass		Dimensions (mm)						Weight (kg)
			50 HZ - 1 min Kv rms	1,2/50 μ s Kv peak	A	B	C	D	E	F	
7200	192	SI 7,2/192	20	60	400	226	322	347	175	270	3,8
12000	292	SI 12/292	28	75	424	324	200	445	175	270	4,1
17500	292	SI 17,5/292	38	95	424	324	200	445	220	315	5,1
24000	442	SI 24/442	50	125	576	476	270	597	270	365	5,5
36000	537	SI 36/537	70	170	670	570	350	691	354	449	7,7
12000	292	SE 12/292	28	75	424	324	200	445	261	356	7,5
17500	292	SE 17,5/292	38	95	424	324	200	445	261	356	7,5
24000	442	SE 24/442	50	125	576	476	270	597	309	404	8,8
36000	537	SE 36/537	70	170	670	570	350	691	381	476	13,2